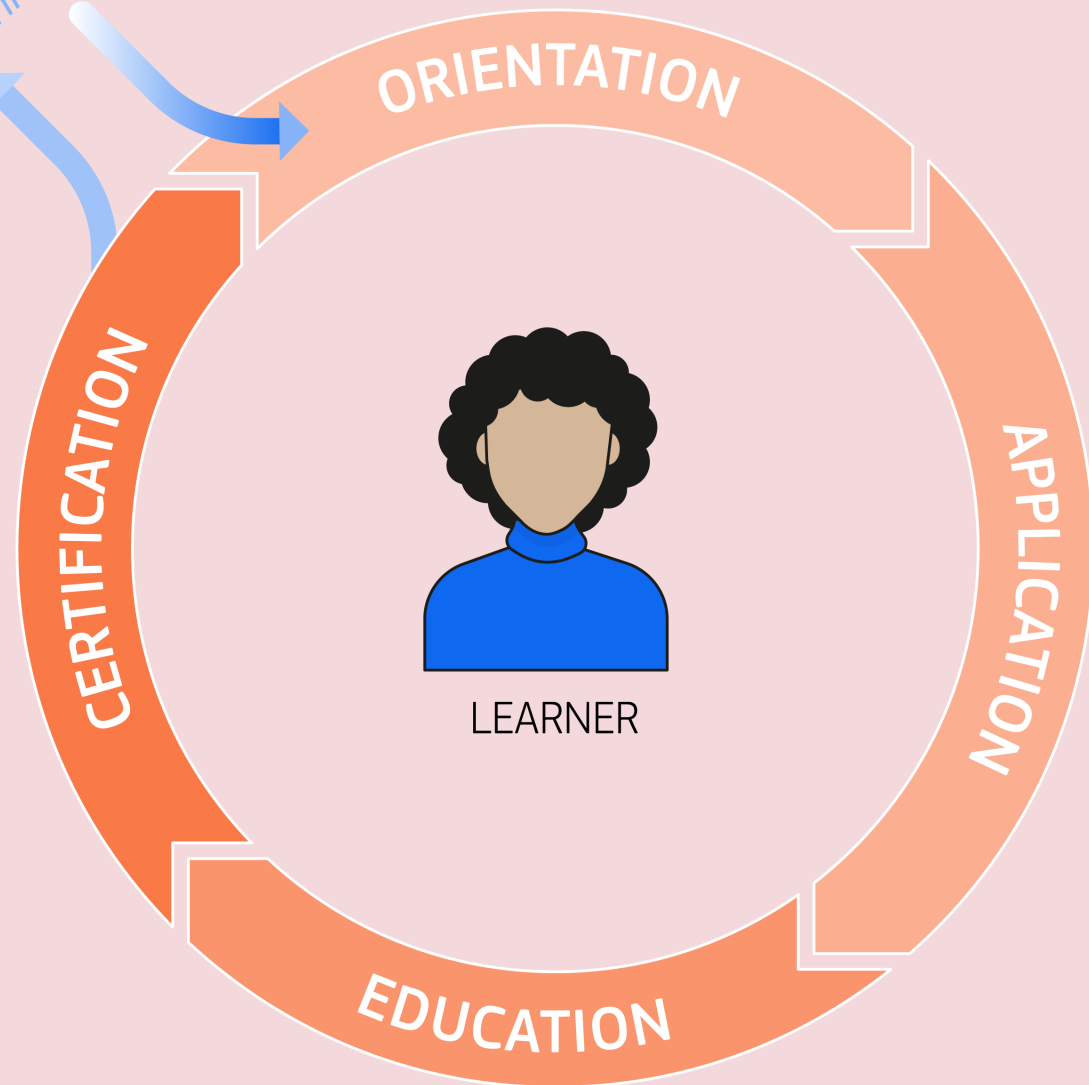


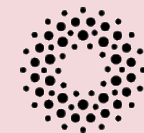
Professional
Recognition



Education Learner Journey

A visual language

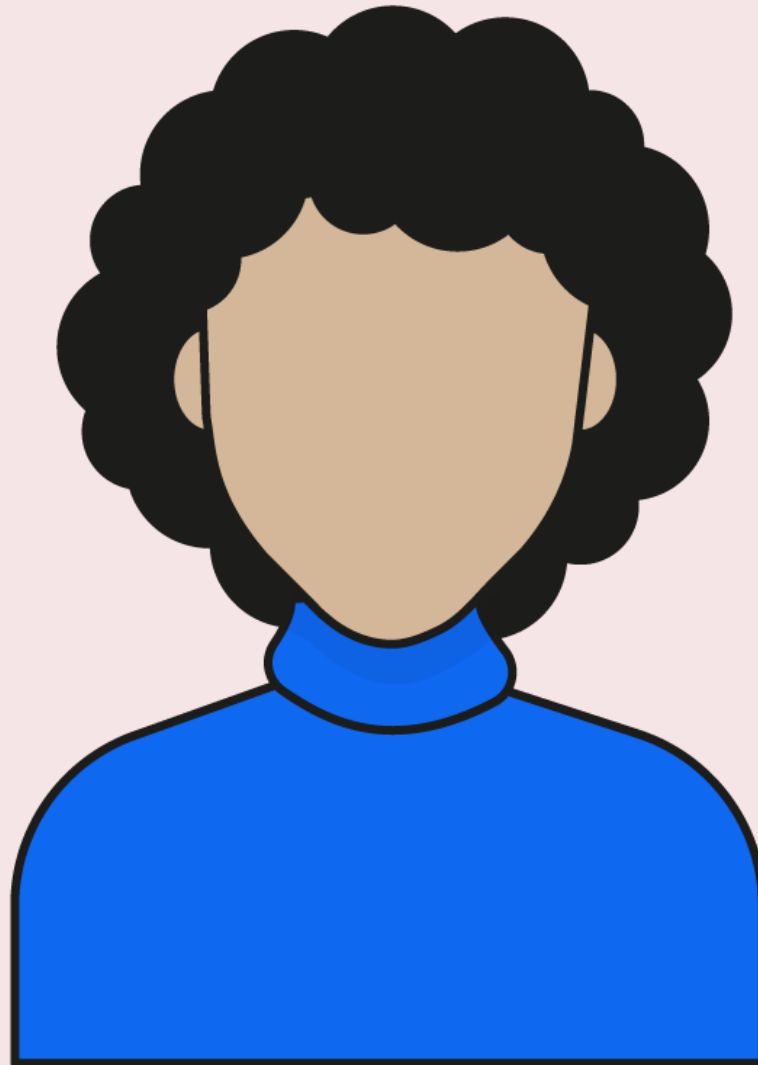
Version March 2025



Npuls

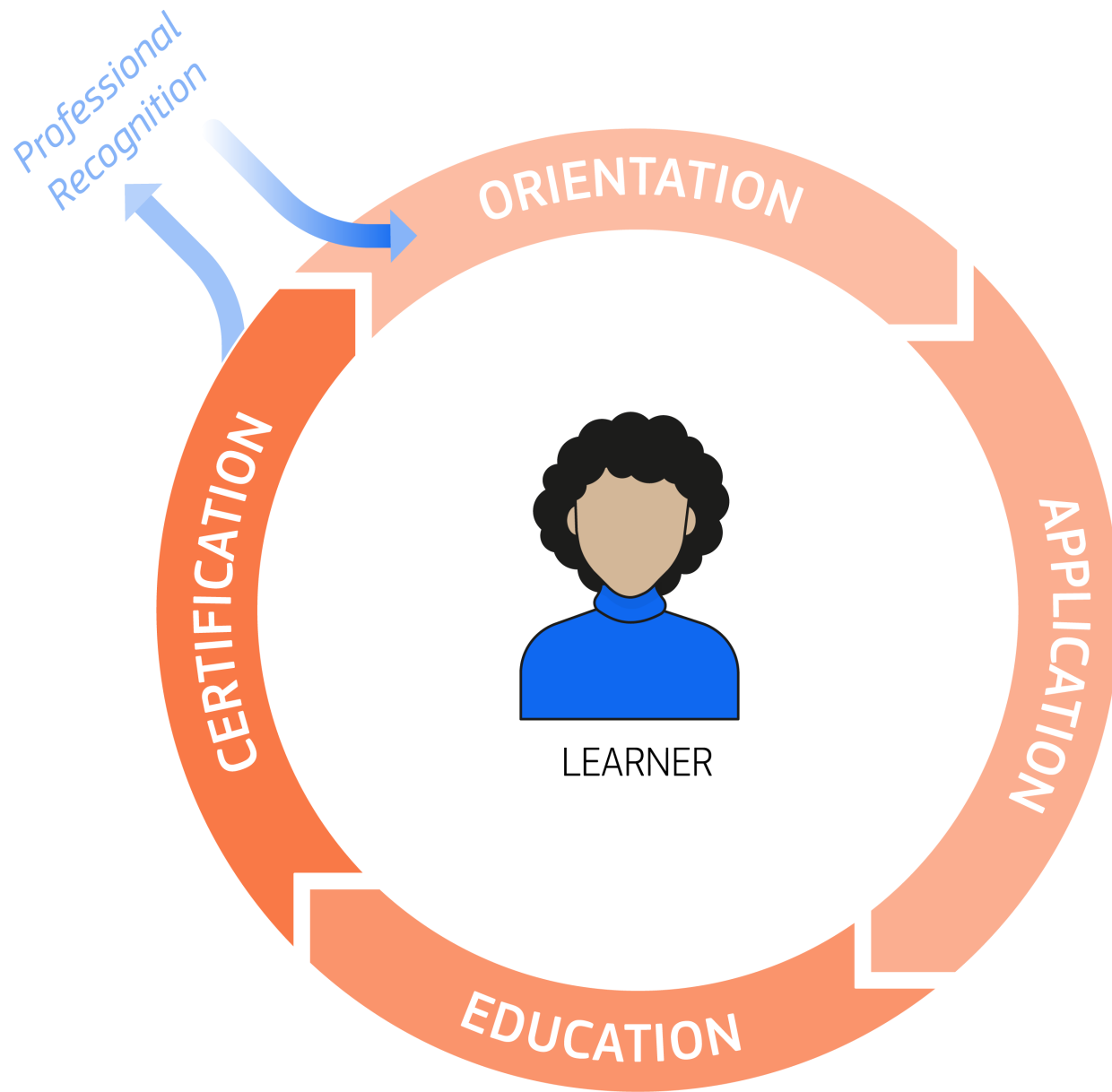
One learner
One alliance
=
Nine institutions

Meet Sam →









LEARNER

Sam's learner Journey

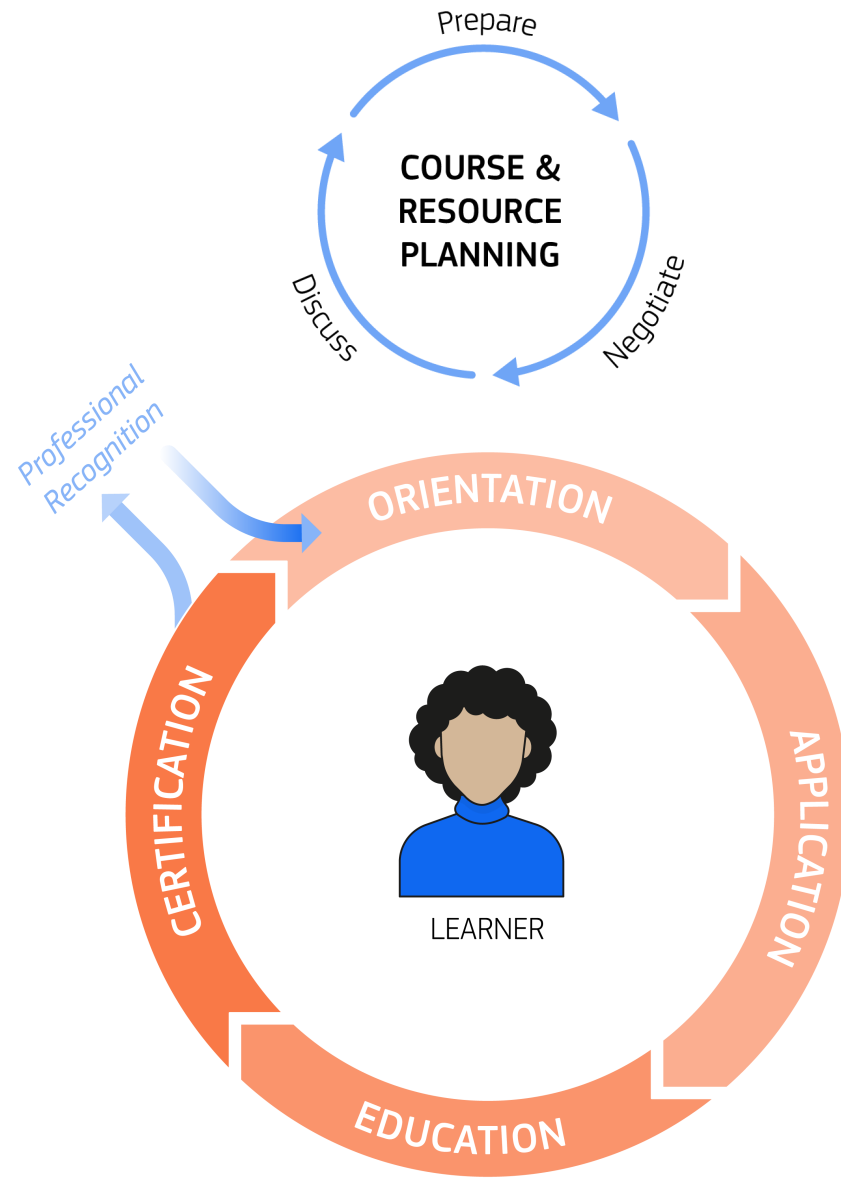


LEGEND

-  Learner journey
-  Enabling processes
-  Use case (and phase it is associated with)
-  Supporting use case (is not associated with a particular phase)
-  Institution layer

 = Learner cycle for big and small learning opportunities: like a course, module or whole programme.

Support and teacher staff work on the support cycles



LEGEND

- Learner journey
- Enabling processes
- Use case (and phase it is associated with)
- Supporting use case (is not associated with a particular phase)
- Institution layer

= Learner cycle for big and small learning opportunities: like a course, module or whole programme.

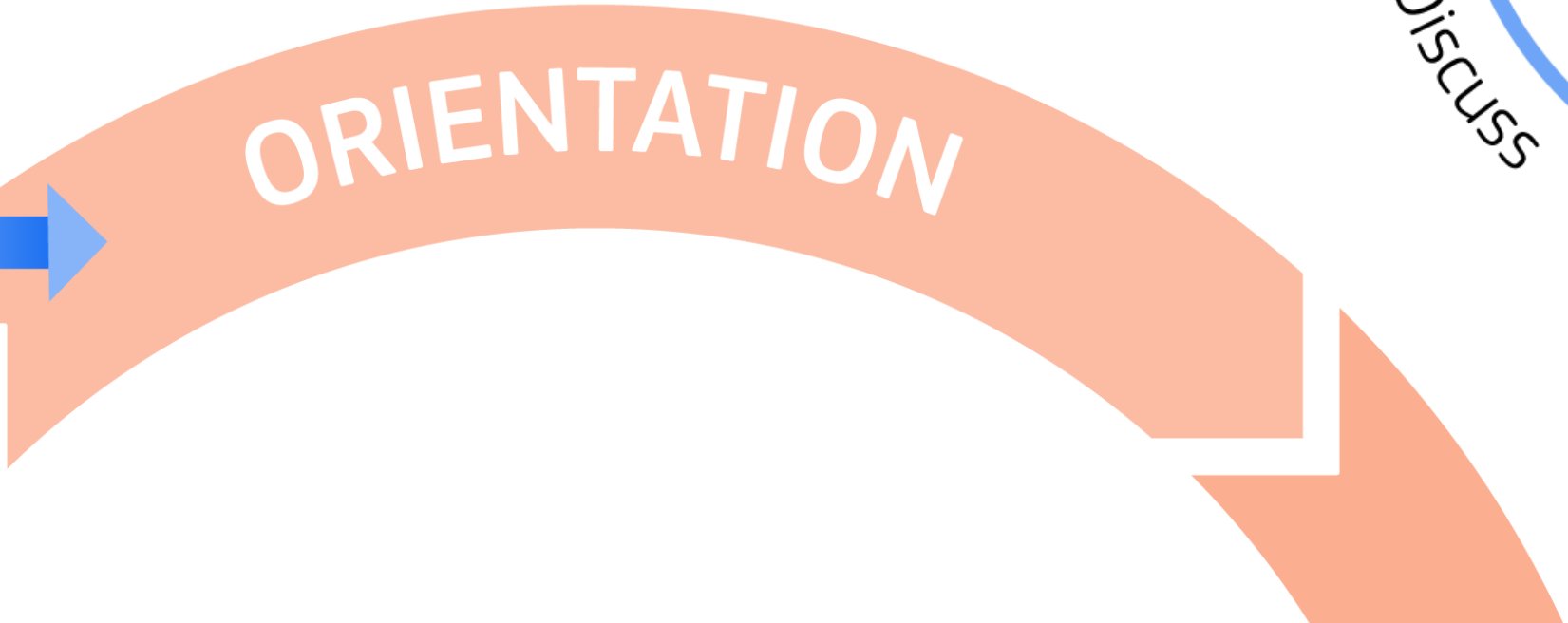
USE CASE 1

Discover



Enhancing the visibility and comparability of diverse learning and mobility opportunities across HEIs, emphasising the importance of machine-readable metadata for easy comparison and discovery.

- CMS (Website)
- Course catalogue
- Curriculum management



The diagram



USE CASE 2

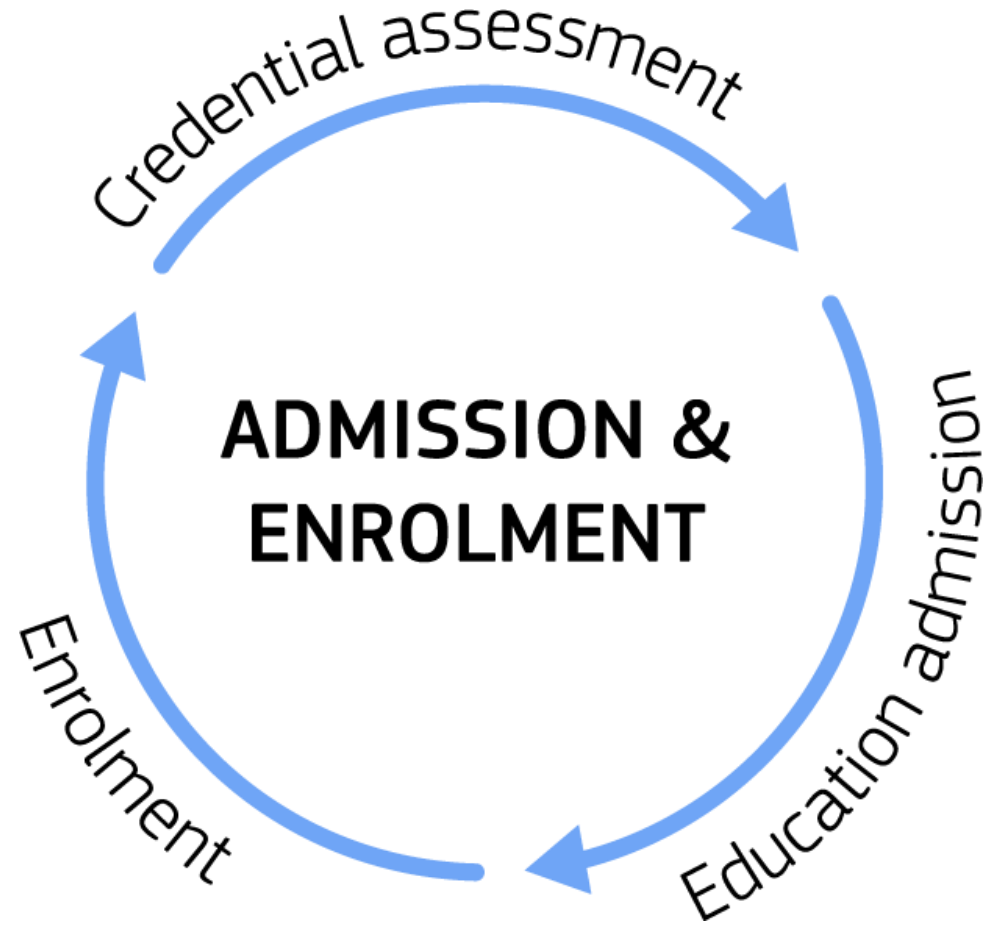
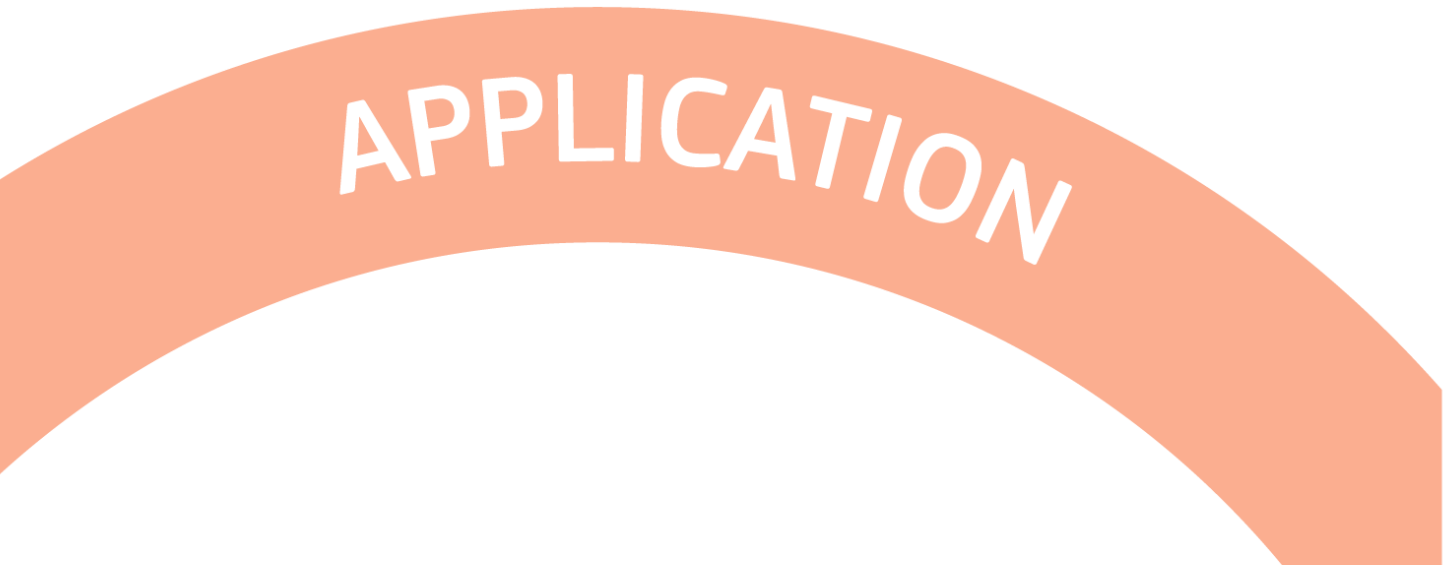
Apply and get recognition



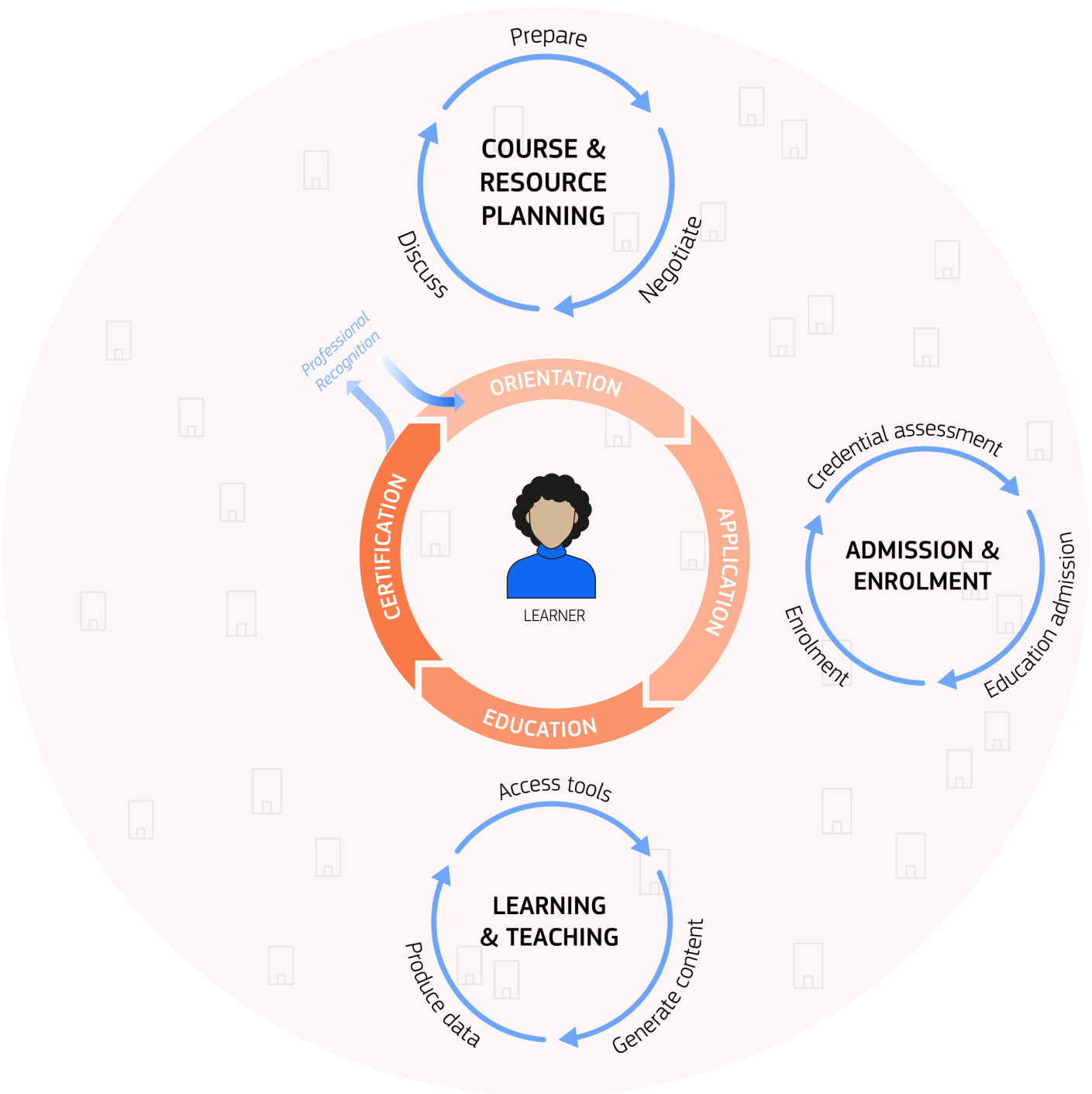
Simplifying credit recognition and cross-institutional enrolment, emphasising seamless data exchange to support all forms of learner mobility and academic continuity.

Admissions

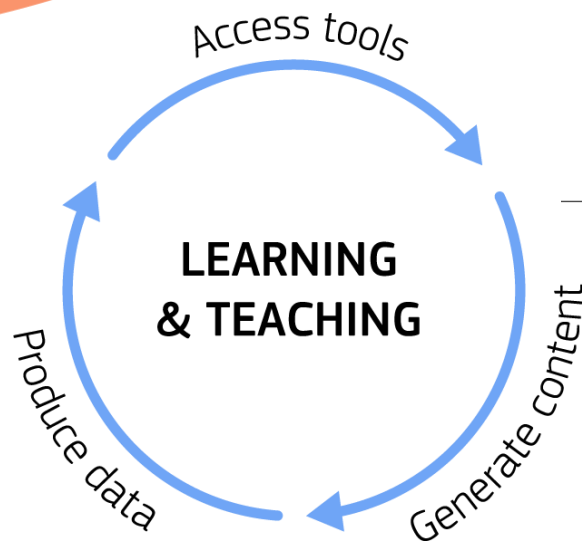
Recognition



The diagram



EDUCATION



USE CASE 3

Access tools



Streamlining the management and governance of shared resources among alliance members, covering both physical and virtual assets.

Laboratory access

Library systems

Research tool registry

USE CASE 4

Manage educational resources



Promoting the accessibility and mobility of educational materials, fostering a collaborative and accessible educational environment.

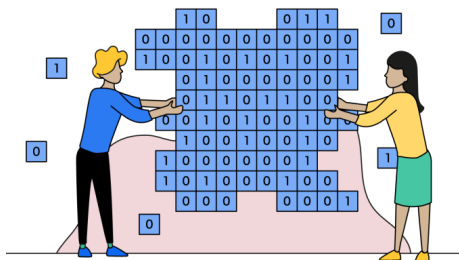
Content generation

Sharing

Use and re-use

USE CASE 5

Generate data



Establishing a standardised approach for the exchange of learners' activity data to ensure a seamless integration of various virtual learning environments.

Learning Analytics

Student Analytics

EDUCATION

USE CASE 3

Access tools

Streamlining the management and governance of shared resources among alliance members, covering both physical and virtual assets.

Laboratory access

Library systems

Research tool registry



Access tools

**LEARNING
& TEACHING**

Content

**LEARNING
& TEACHING**

Generate content

USE CASE 4

Manage educational resources

Promoting the accessibility and mobility of educational materials, fostering a collaborative and accessible educational environment.



Content generation

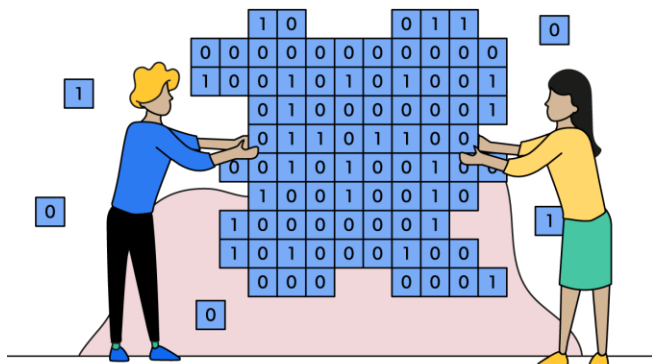
Sharing

Use and re-use

EDUCATION

USE CASE 5

Generate data



Establishing a standardised approach for the exchange of learners' activity data to ensure a seamless integration of various virtual learning environments.

Learning Analytics

Student Analytics

LEARNING & TEACHING

Produce data

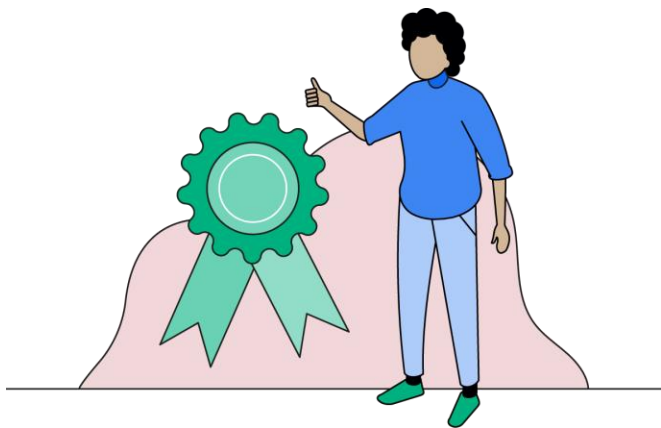
Generate

The diagram



USE CASE 6

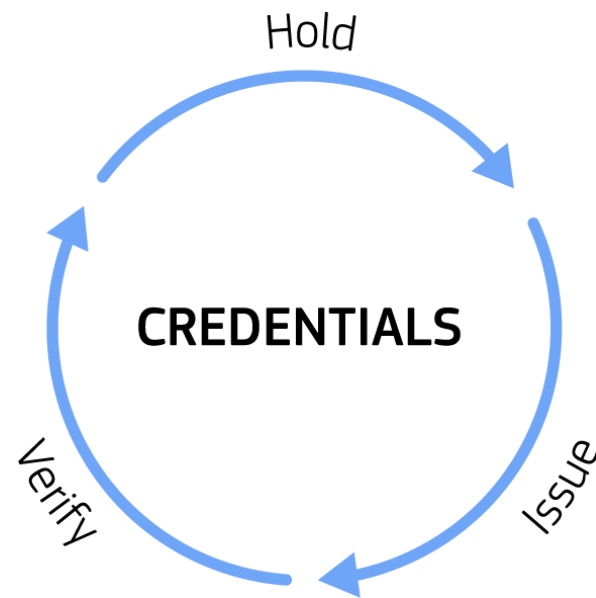
Earn a credential



The digital management of educational credentials (issuance, verification, revocation), affirming the achievements from diverse learning experiences.

Micro-credentials

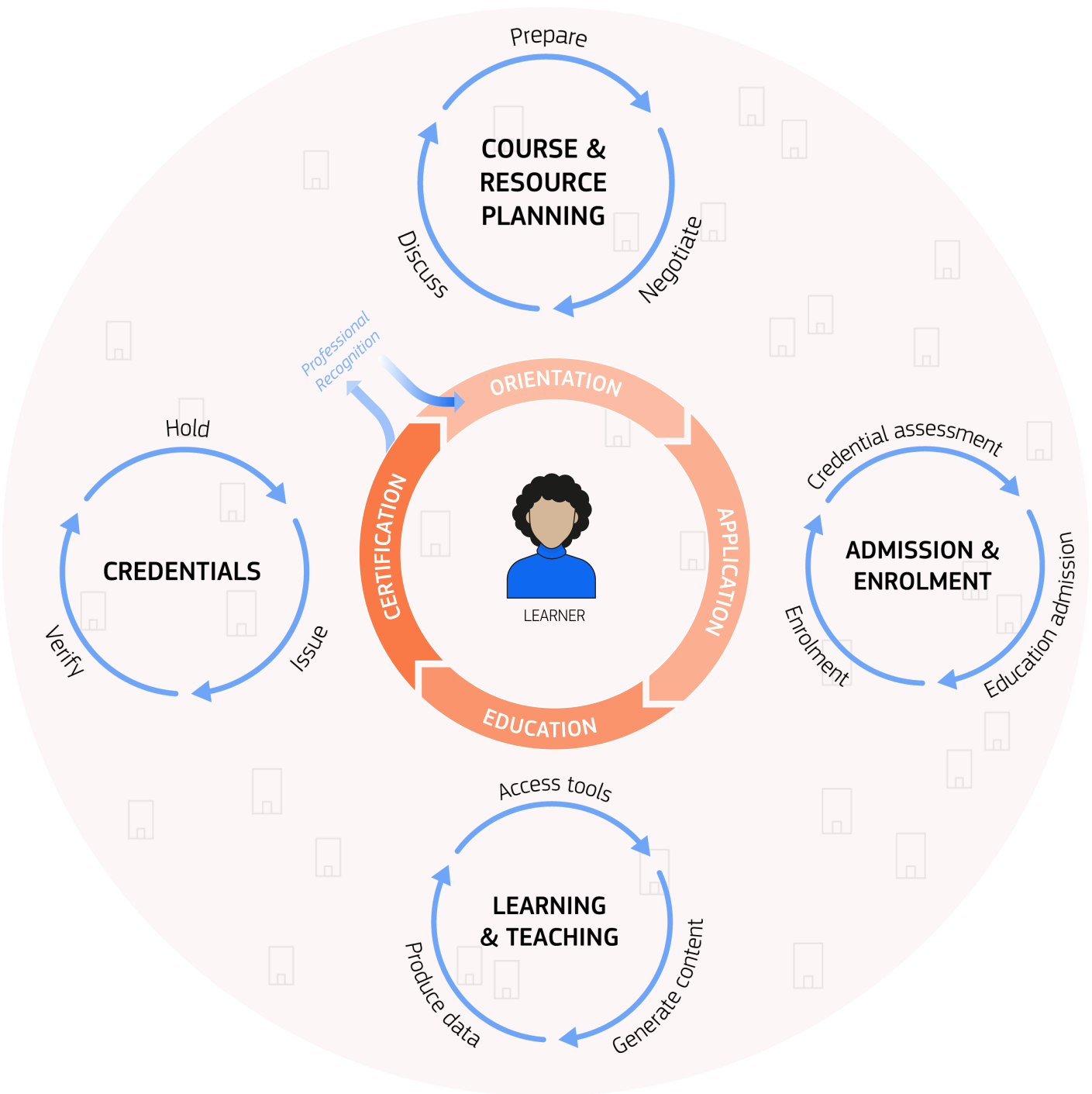
Portable creden

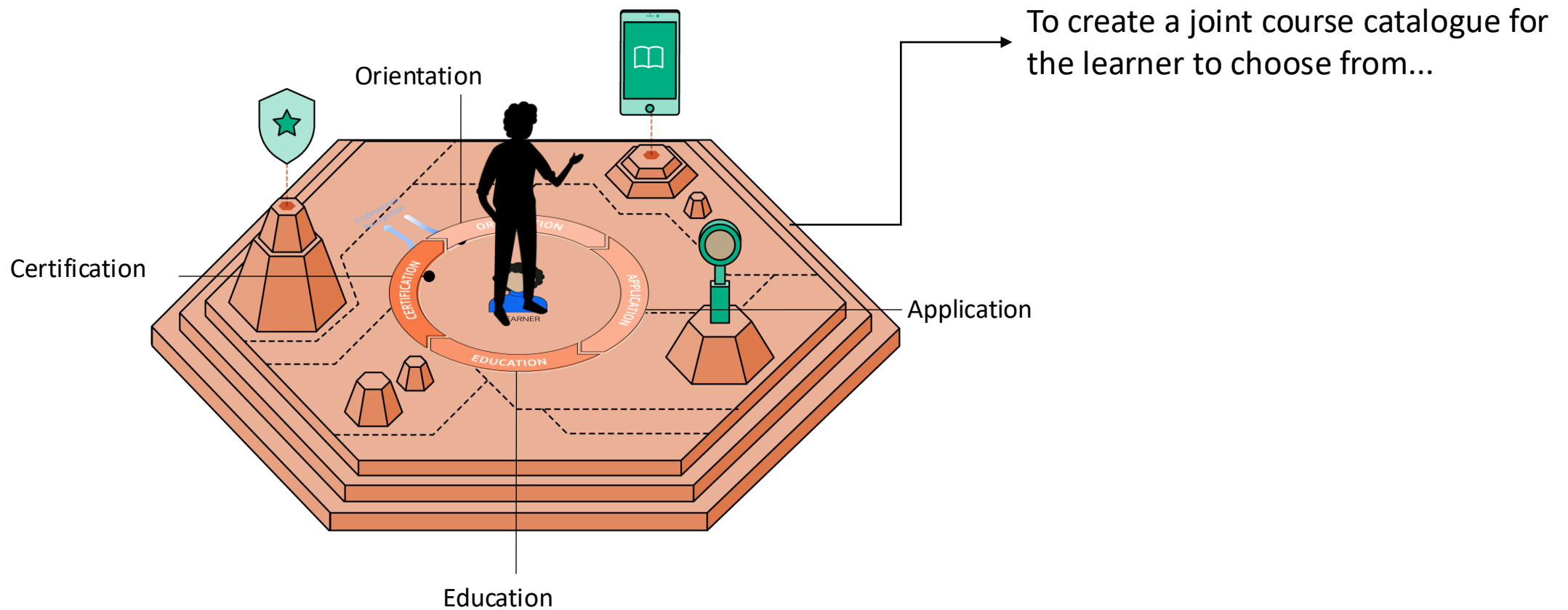


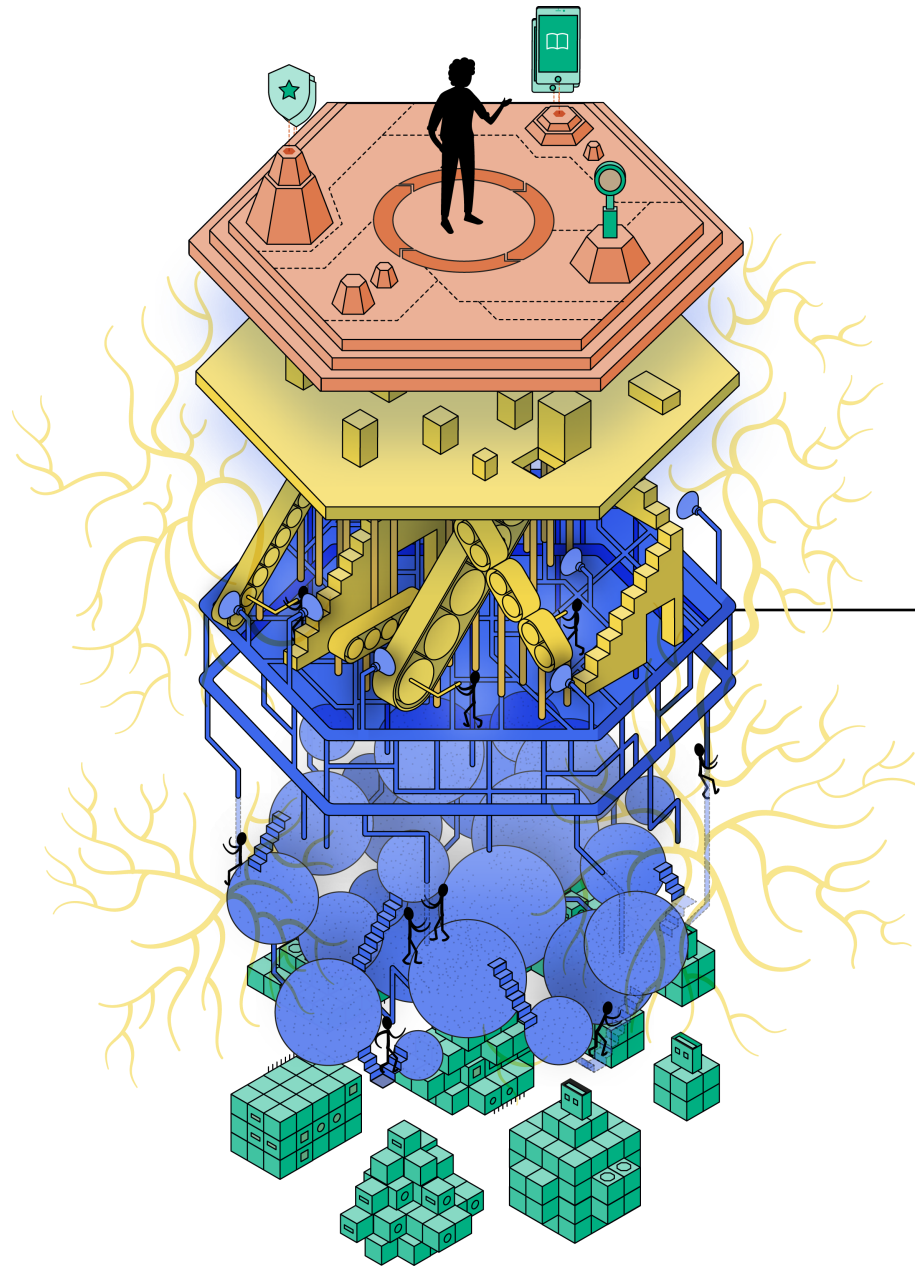
CERTIFICATION

Pro
Rec

The diagram

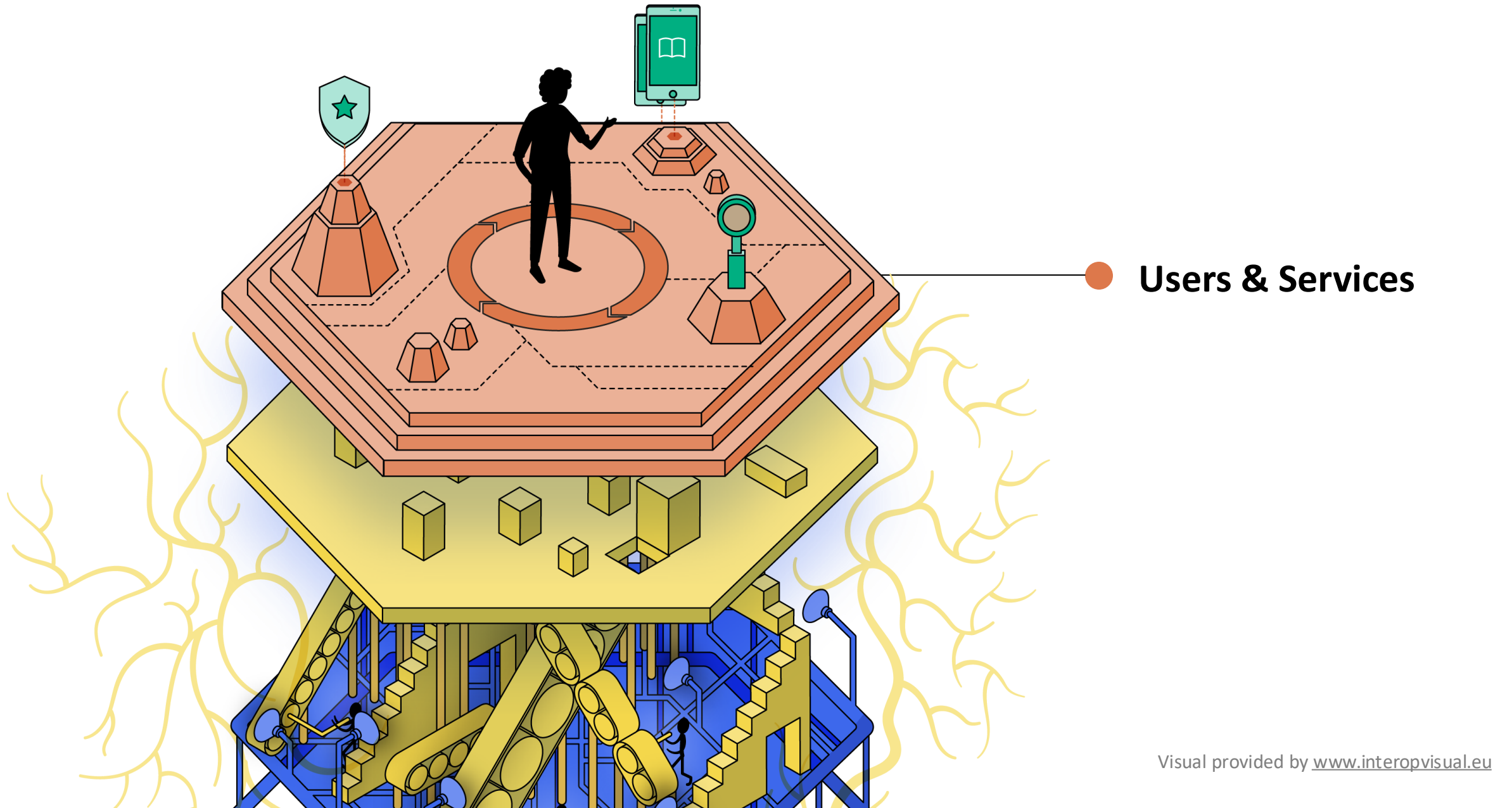




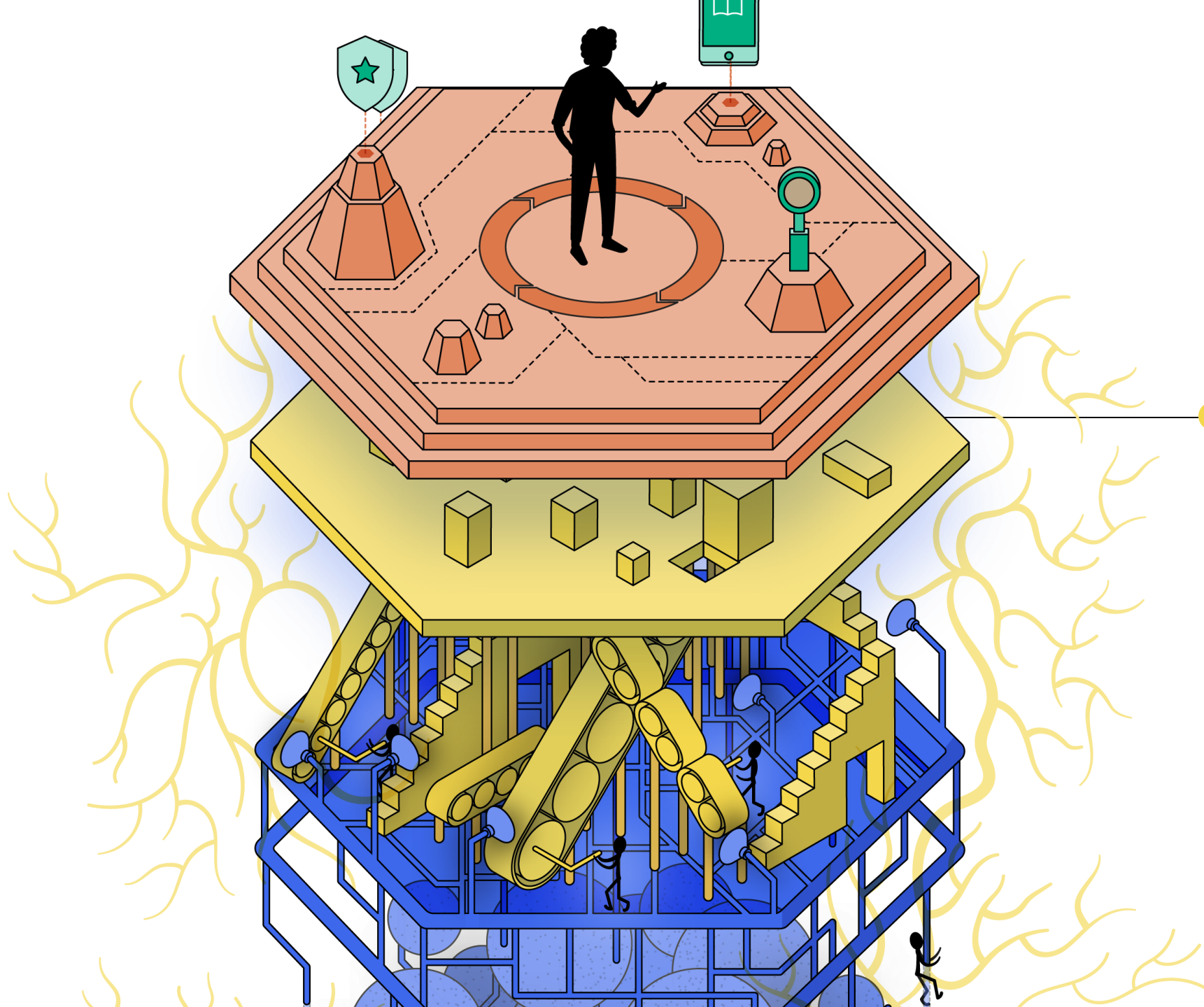


... a whole **invisible** ecosystem is needed.

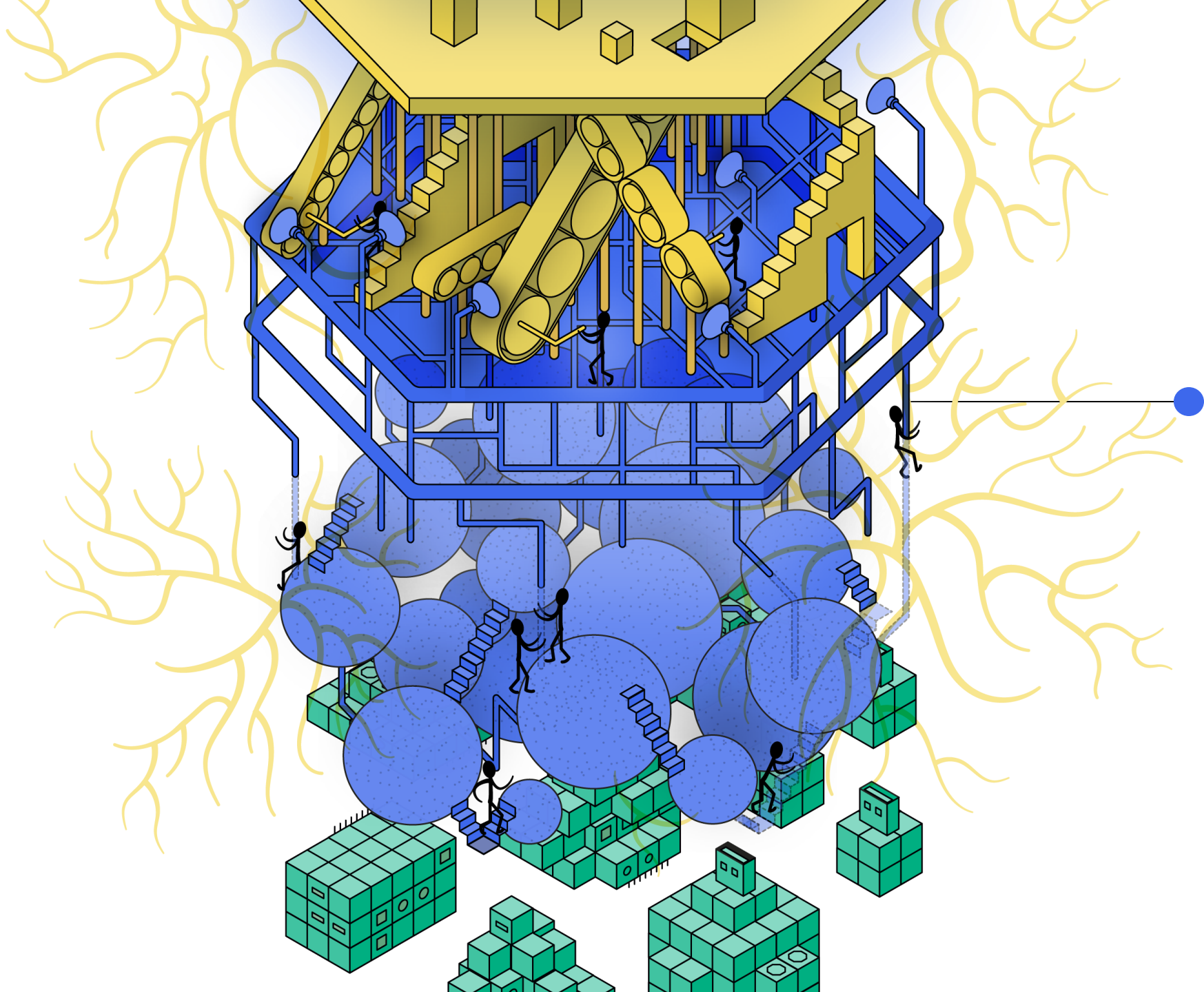
Colleagues are working together across four layers



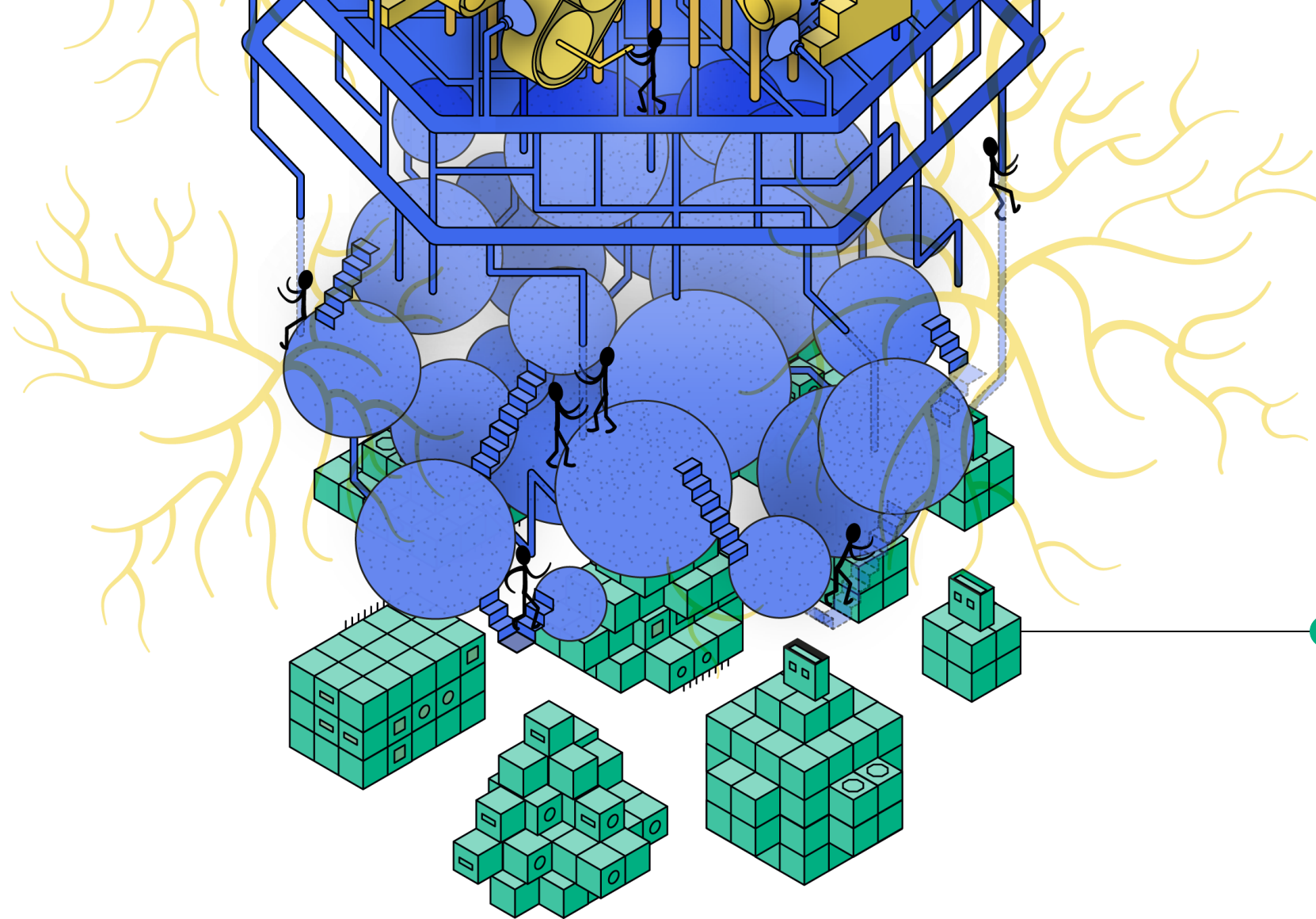
● **Users & Services**



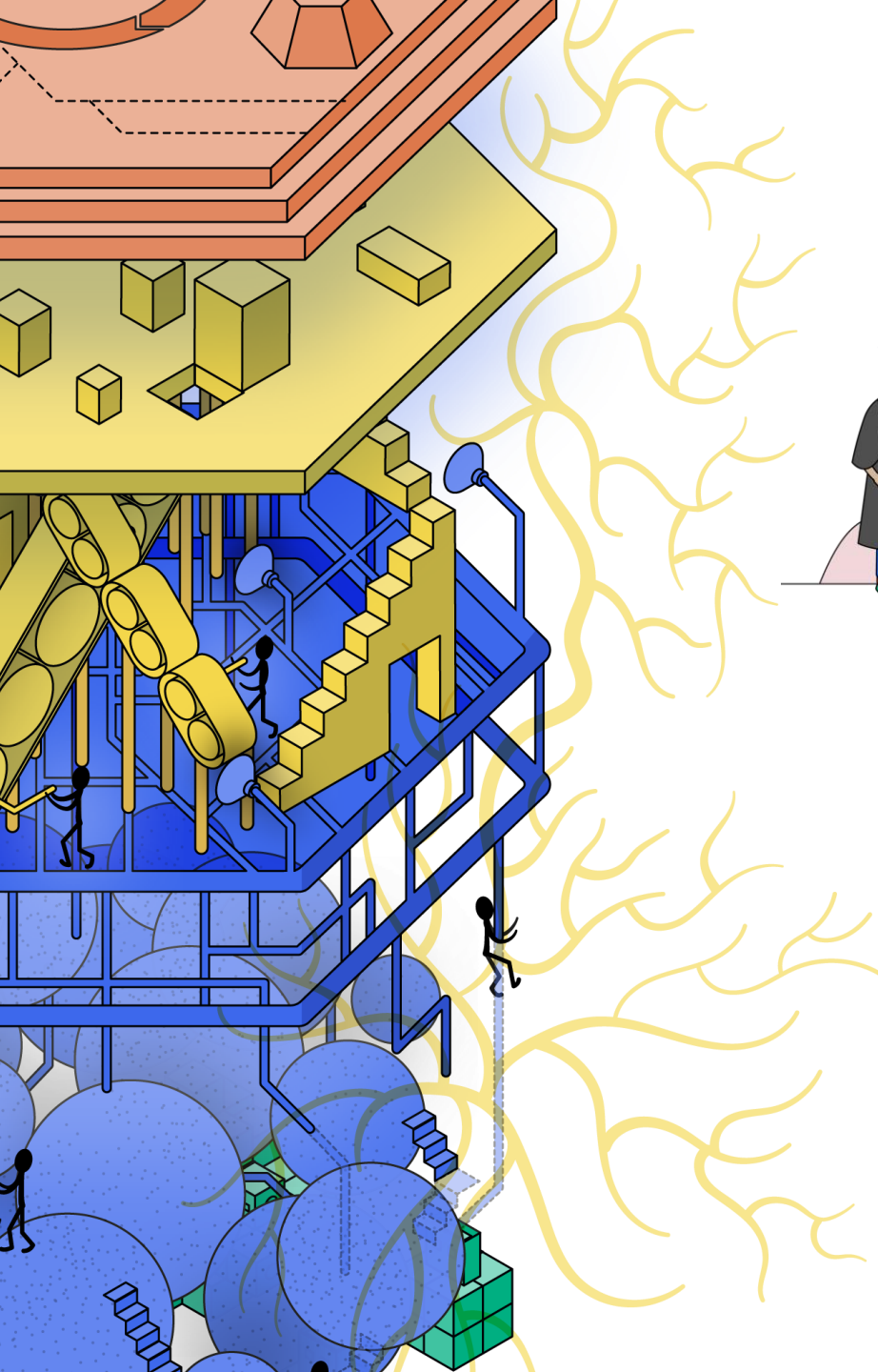
● Organisation & Processes



Applications & Information



● Technology



USE CASE 7

User identity



Achieving interoperability for user identities across educational transitions, ensuring consistent identification throughout their academic journey.

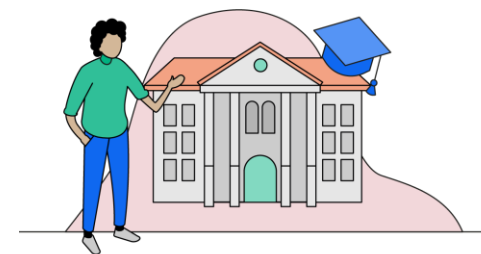
Access

Federated identity

Student cards

USE CASE 8

Institutional identity



Developing a cohesive framework for trusted institutional identities, facilitating smoother collaborations and exchanges between HEIs.

Accreditation

Ranking

USE CASE 1

Discover



Enhancing the visibility and comparability of diverse learning and mobility opportunities across HEIs, emphasising the importance of machine-readable metadata for easy comparison and discovery.

CMS (Website)

Course catalogue

Curriculum management

USE CASE 2

Apply and get recognition



Simplifying credit recognition and cross-institutional enrolment, emphasising seamless data exchange to support all forms of learner mobility and academic continuity.

Admissions

Recognition

USE CASE 3

Access tools



Streamlining the management and governance of shared resources among alliance members, covering both physical and virtual assets.

Laboratory access

Library systems

Research tool registry

USE CASE 4

Manage educational resources



Promoting the accessibility and mobility of educational materials, fostering a collaborative and accessible educational environment.

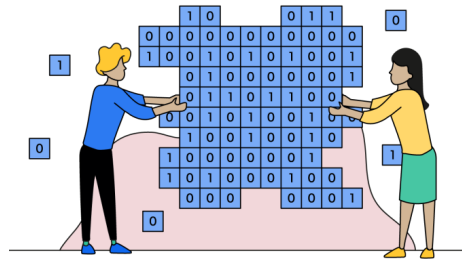
Content generation

Sharing

Use and re-use

USE CASE 5

Generate data



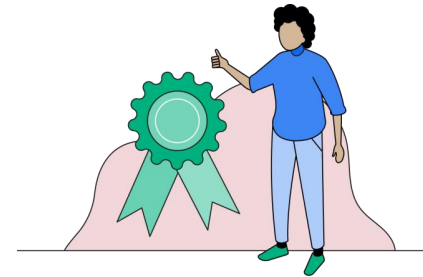
Establishing a standardised approach for the exchange of learners' activity data to ensure a seamless integration of various virtual learning environments.

Learning Analytics

Student Analytics

USE CASE 6

Earn a credential



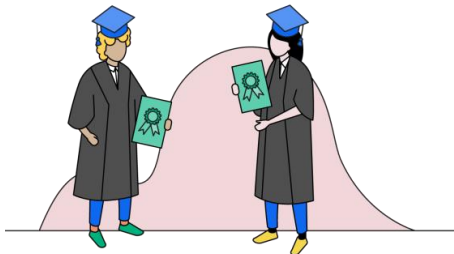
The digital management of educational credentials (issuance, verification, revocation), affirming the achievements from diverse learning experiences.

Micro-credentials

Portable creden

USE CASE 7

User identity



Achieving interoperability for user identities across educational transitions, ensuring consistent identification throughout their academic journey.

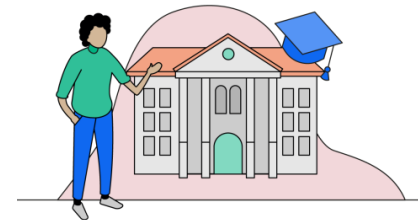
Access

Federated identity

Student cards

USE CASE 8

Institutional identity



Developing a cohesive framework for trusted institutional identities, facilitating smoother collaborations and exchanges between HEIs.

Accreditation

Ranking